

BRIDGE NO.	CODE NO.	NAME PLATE TITLE	UNIT OF BRIDGE	ITEM NO.	SP-801		SP-801	SP-802	SP-802	SP-803	SP-804	SP-805	SP-812	SP-817
				ITEM	Common Excavation For Structure		Rock Excavation For Structure	Class A Concrete	Class S Concrete	Reinforcing Steel	Steel Bearing Piling (10" BP @ 42")	Steel Plate Guard Bridge Railing (10 Ga)	Bridge Name Plates (Type C)	Riprap
				UNIT	Cu Yd.		Cu Yd.	Cu Yd.	Cu Yd.	Lb.	Lin. Ft.	Lin. Ft.	Each	Cu Yd.
2804 E	Y050	HURRICANE CREEK	End Bent No. 1	31		-	-	702	1023	65	-	-	1	101
			Piers No. 1-5 incl.	127	63	127.19	-	-	11,637	-	-	-	-	
			End Bent No. 2	31	-	-	-	702	1023	75	-	-	35	
			4-30' R.C. Slab Spans	-	-	-	255.27	48,242	-	366	-	-		
			Totals for Bridge No. 2804 E	189	63	127.19	269.12	61,863	140	366	1	136		
2804 C	Y050	HURRICANE CREEK	End Bent No. 1	31		-	-	702	1023	70	-	-	1	31
			Piers No. 1-5 incl.	248	22	125.80	-	-	11,567	-	-	-	-	
			End Bent No. 2	31	-	-	-	702	1023	75	-	-	35	
			4-30' R.C. Slab Spans	-	-	-	255.08	48,242	-	366	-	-		
			Totals for Bridge No. 2804 C	310	22	125.80	269.12	61,863	145	366	1	145		
2804 B	Y050	CROOKED CREEK	End Bent No. 1	31		-	-	702	1023	90	-	-	1	120
			Piers No. 1, 2 & 3	171	19	83.87	-	-	7,675	-	-	-	-	
			End Bent No. 2	31	-	-	-	702	1023	-	-	-	115	
			4-30' R.C. Slab Spans	-	-	-	170.44	32,163	-	246	-	-		
			Totals for Bridge No. 2804 B	233	19	83.87	184.48	41,916	175	246	1	131		
2804 A	Y050	CROOKED CREEK	End Bent No. 1	31		-	-	702	1023	105	-	-	1	113
			Piers No. 1, 2 & 3	269	20	96.44	-	-	8,720	-	-	-	-	
			End Bent No. 2	31	-	-	-	702	1023	110	-	-	32	
			4-30' R.C. Slab Spans	-	-	-	170.44	32,163	-	246	-	-		
			Totals for Bridge No. 2804 A	331	20	96.44	184.48	42,006	215	246	1	205		
Totals for Job No. 6653				1063		124		433.30	907.20	206,730	675	1224	4	775

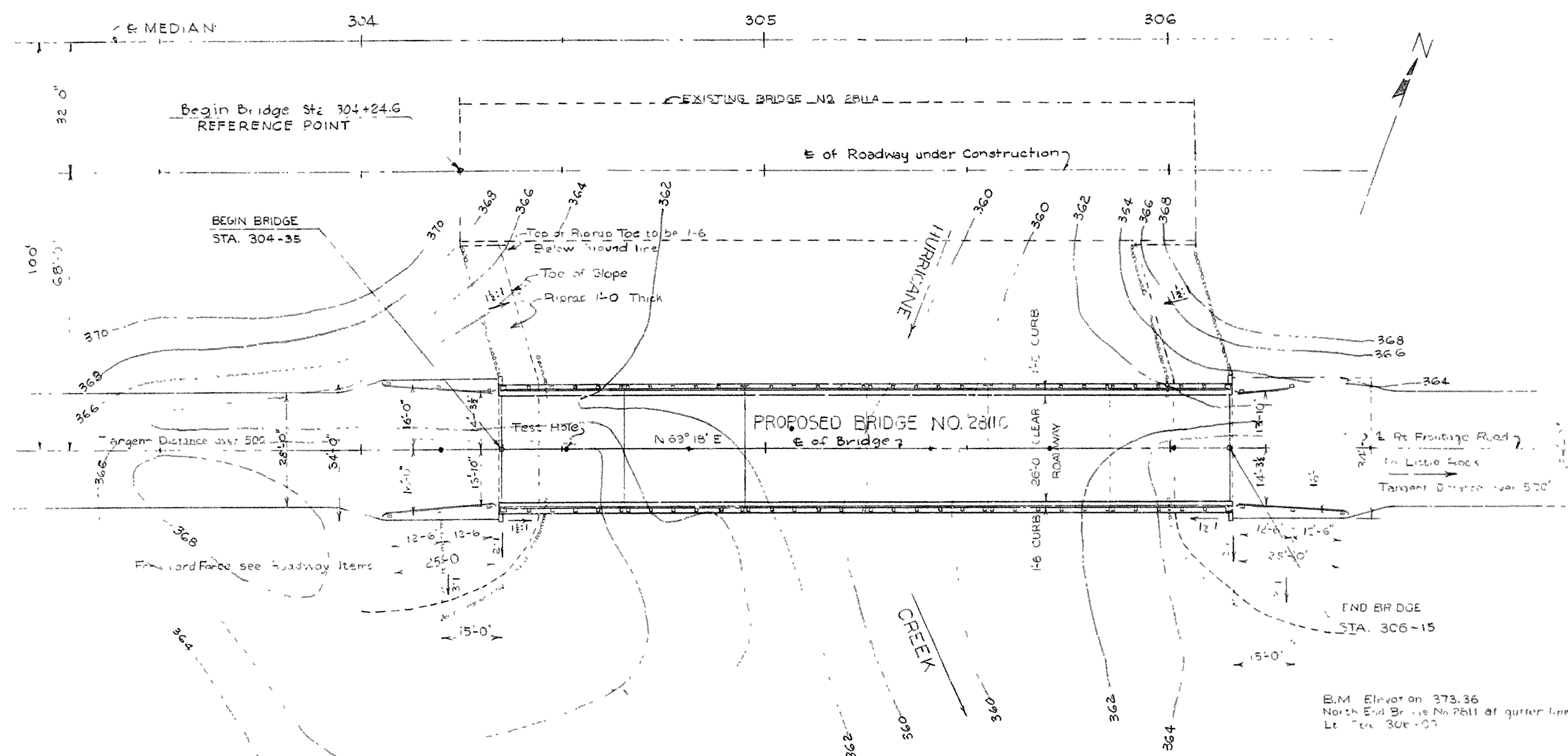
SCHEDULE OF BRIDGE QUANTITIES
BENTON-LITTLE ROCK ADD'L FRONTAGE ROADS
SALINE & PULASKI COUNTIES

INTERSTATE ROUTE 30 SEC. 2
ARKANSAS STATE HIGHWAY COMMISSION

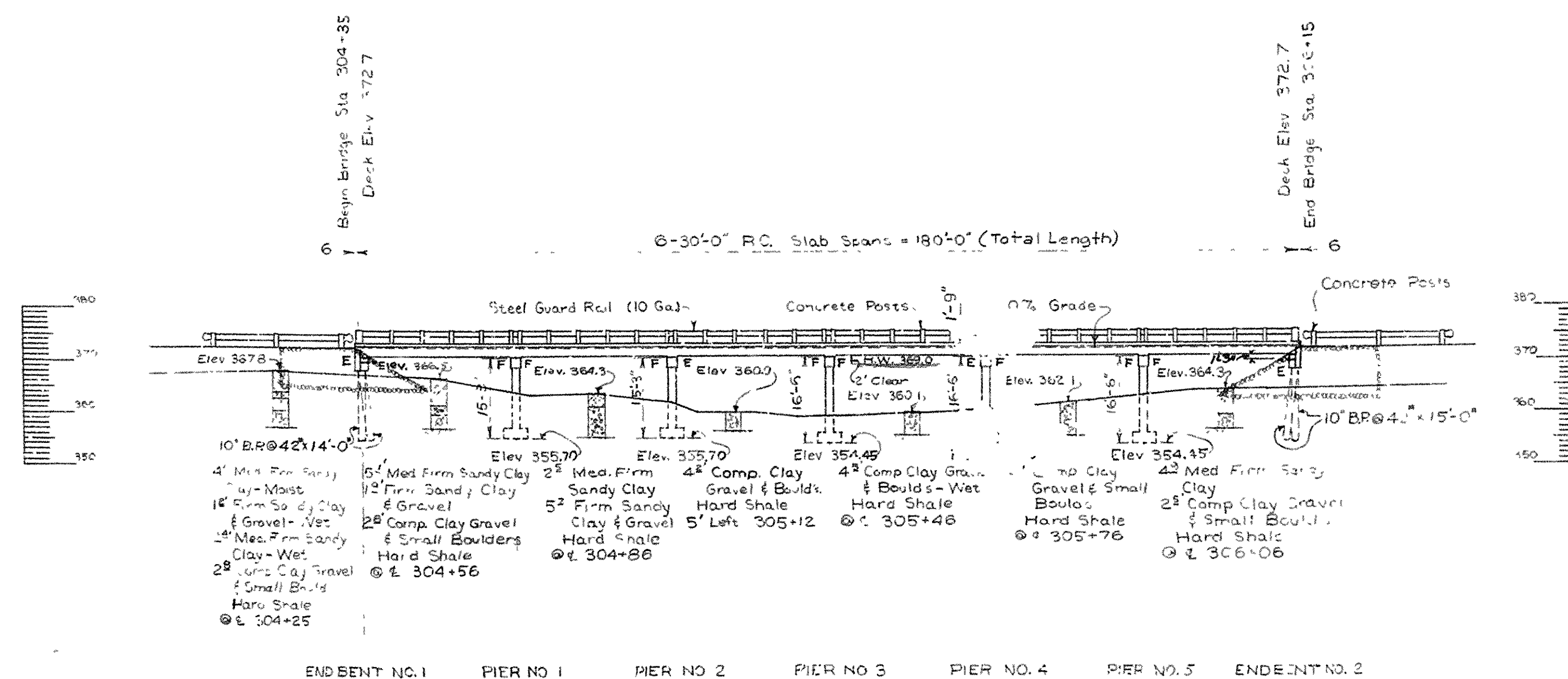
LITTLE ROCK, ARK.
DRAWN BY: DATE: 7/15/53
TRACED BY: DATE: 7-22-53
CHECKED BY: DATE: 7-22-53
BRIDGE NO. 2804 B & C
DRAWING NO. 9306

Revisions:
Item Nos. - 9-24-58 - 4, 5.

L. J. Carlson
BRIDGE DESIGN ENGINEER



PLAN

ELEVATION

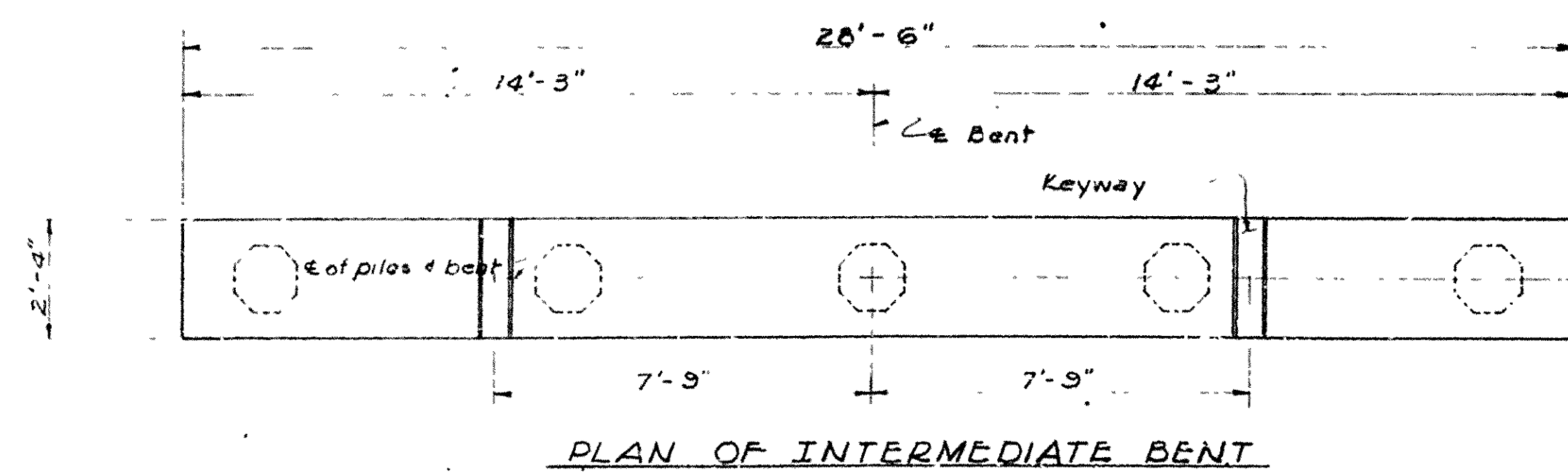
Maximum Foundation Pressure = 1.8 Tons per sq.ft.

Revision:
Revised location of E of Bridge-9-18-58-H.B

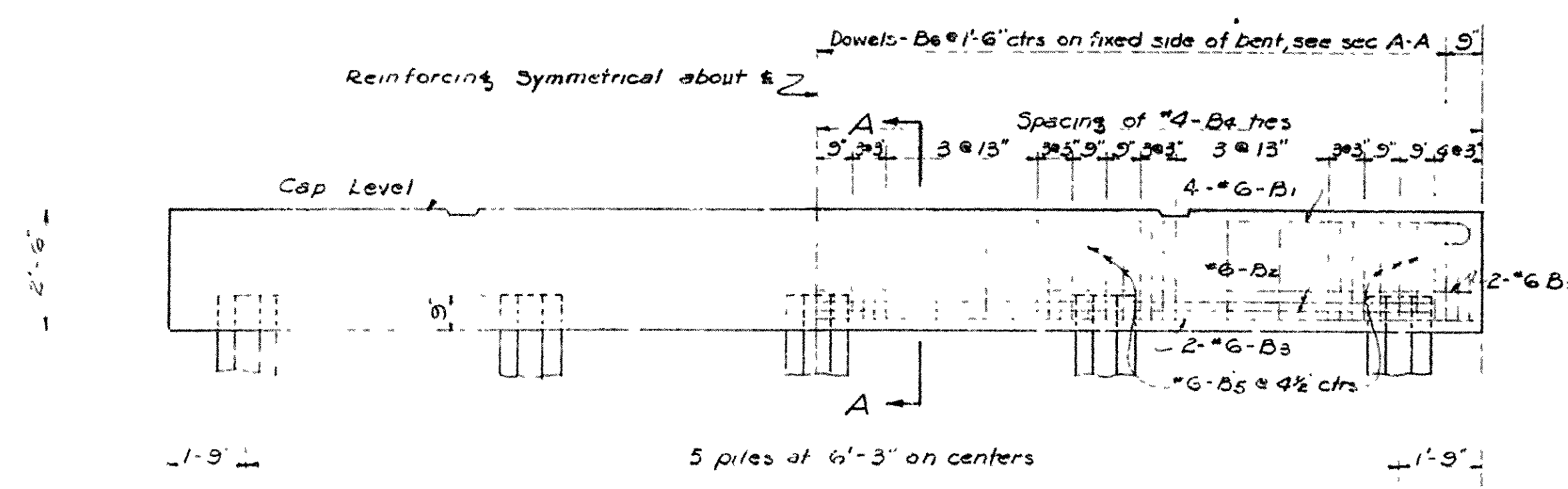
LAYOUT OF
BRIDGE OVER HURRICANE CREEK
BENTON-LITTLE ROCK ADD'L FRONTAGE ROAD-
SALINE COUNTY
INTERSTATE ROUTE 30 SEC. 2
ARKANSAS STATE HIGHWAY COMMISSION
LITTLE ROCK, ARK.

DRAWN BY: SEA DATE: 6/25/53
 TRACED BY: _____ DATE: _____ SCALE: 1 _____
 CHECKED BY: GM DATE: 18 July 58
 BRIDGE NO. 2811C DRAWING NO. 9310

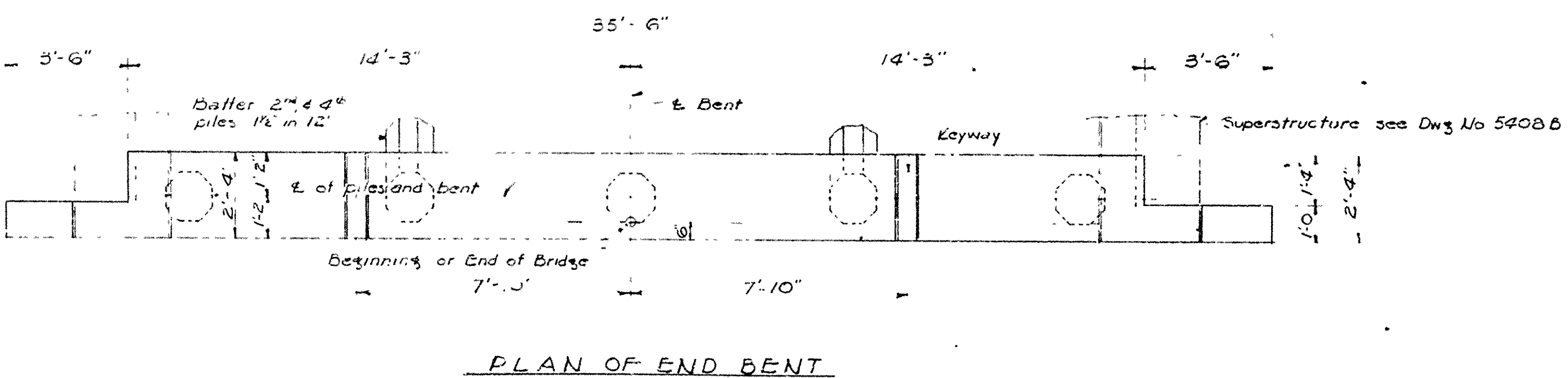
L. P. Carlson
BRIDGE DESIGN ENGINEER



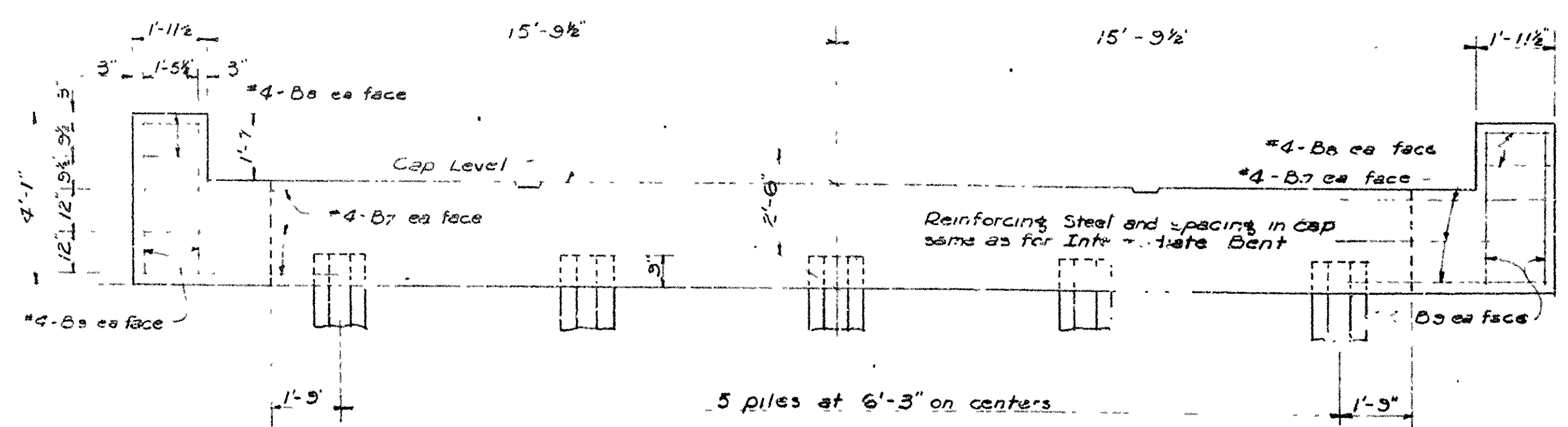
PLAN OF INTERMEDIATE BENT



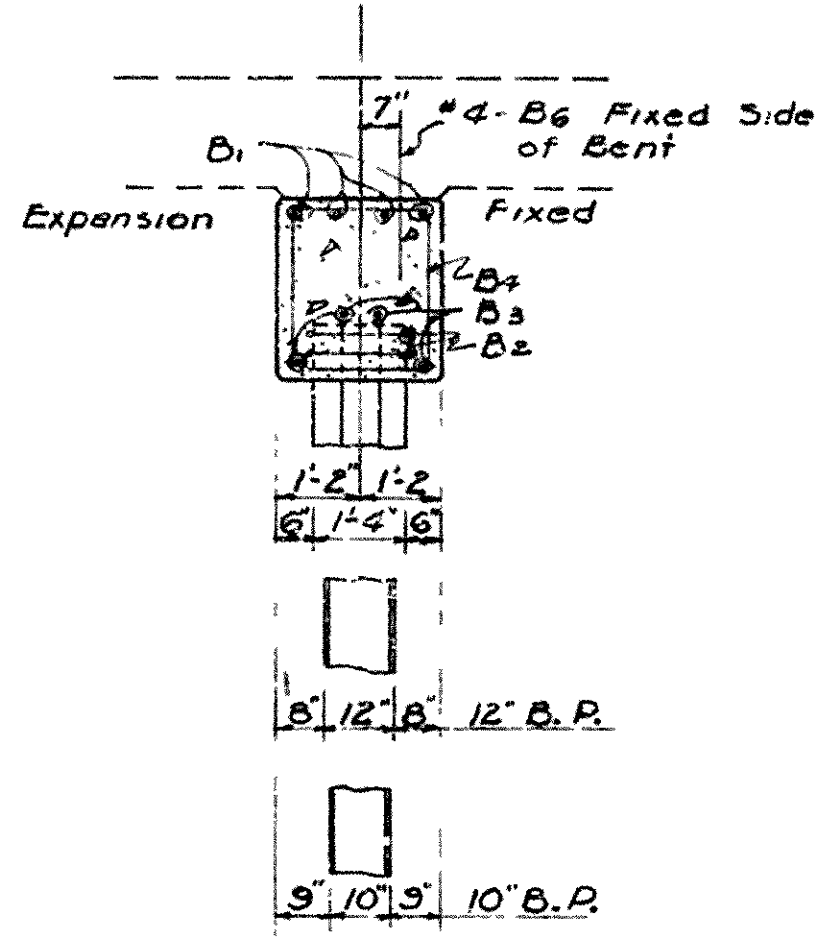
ELEVATION OF INTERMEDIATE BENT



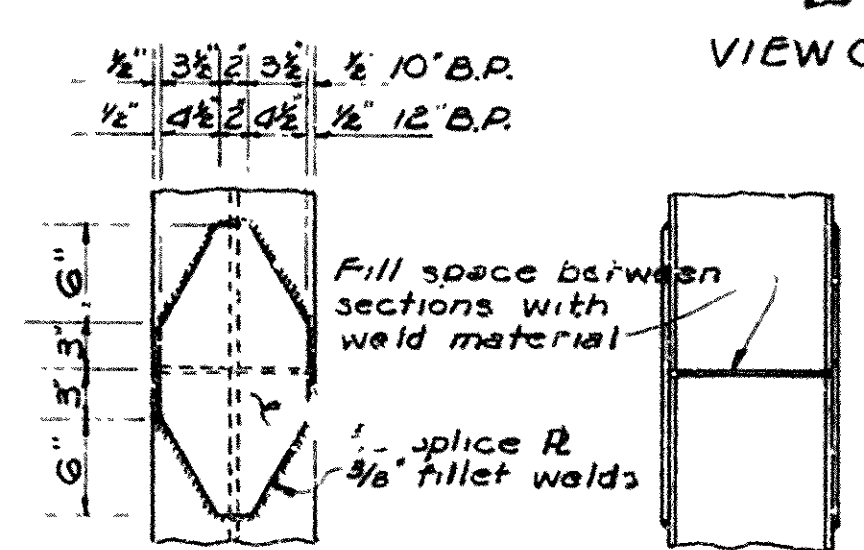
PLAN OF END BENT



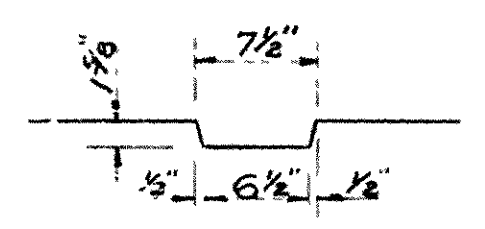
ELEVATION OF END BENT (BACK FACE)



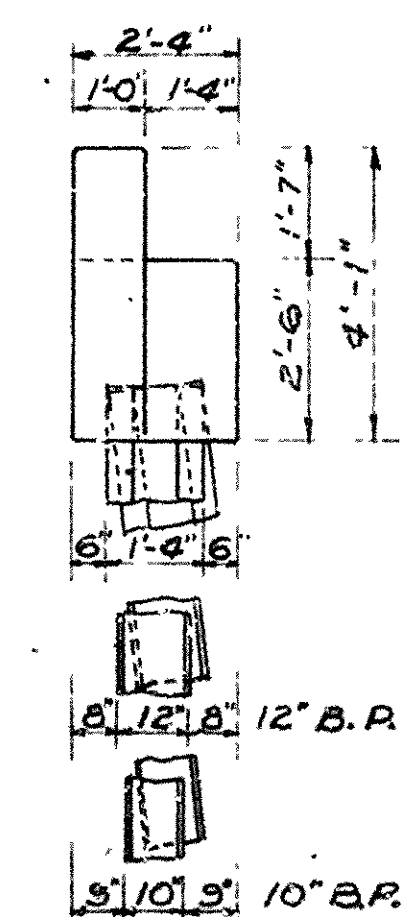
SECTION A-A
Scale 1"=1'-0"



STEEL SPLICE DETAILS
Scale 1"=1'-0"



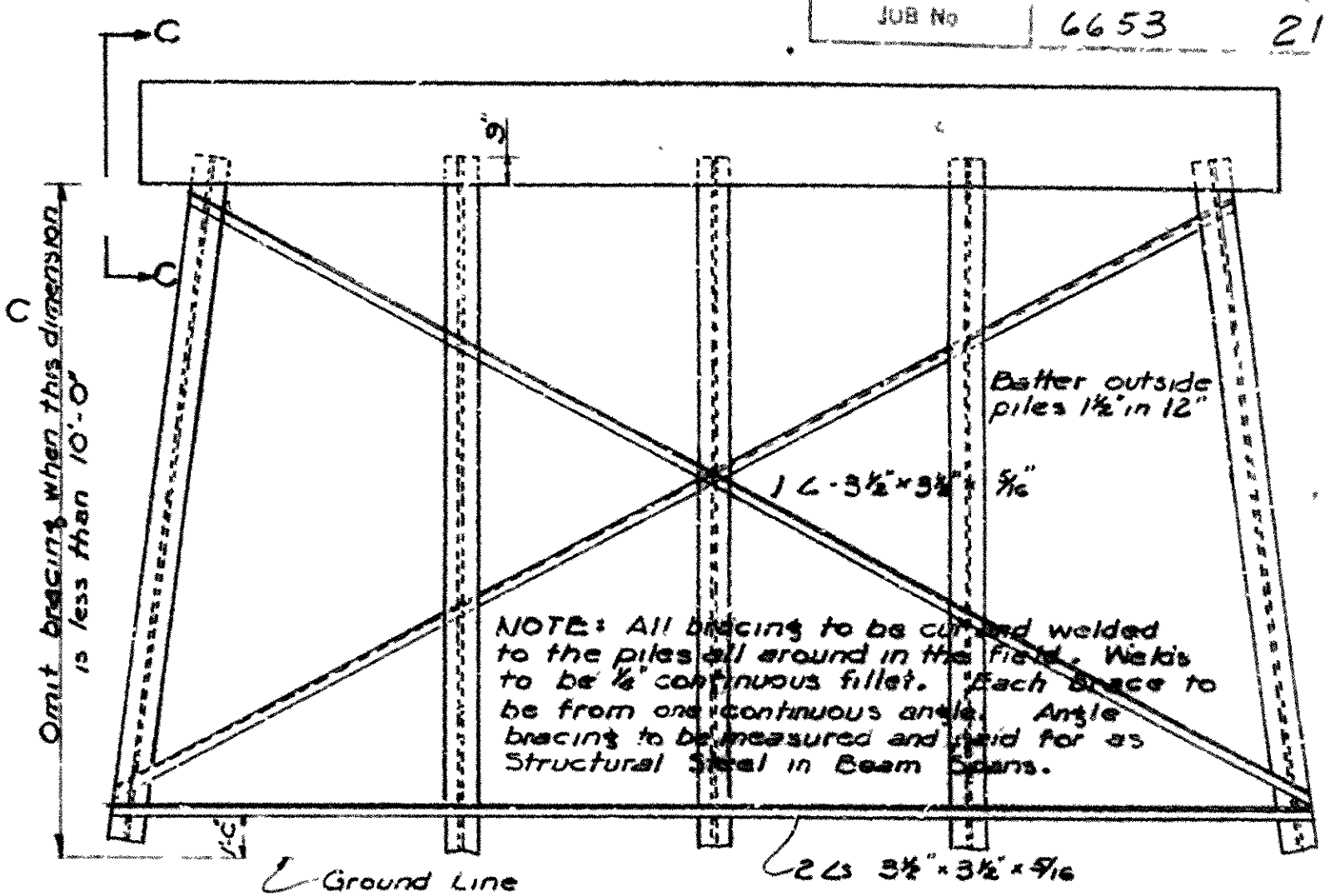
DETAIL OF KEYWAY
Scale 1"=1'-0"



END VIEW

Cut 3" holes in all piles after driving

VIEW C-C



TYPICAL INTERMEDIATE BENT - STEEL PILES
No Scale

GENERAL NOTES

All concrete to be Class S and shall be poured in the dry. All exposed corners to be chamfered 1/4" unless otherwise noted.
Reinforcing steel to be deformed bars of intermediate grade unless otherwise noted by Special Provisions. Shop lists and bending diagrams are to be submitted for approval before fabrication is begun.
All piling shall be driven to a minimum capacity of 35 tons per pile.
Piling shall be either 10" H x 42" 12" H x 55" steel bearing piles or 16" octagonal precast concrete piles as shown on the notes.
Volume occupied by embedded pile heads will not be included in the pay quantities of concrete caps.
For Details of Standard 30'-0" R.C. Slab Spans see Drawing No 5408B
SPECIFICATIONS: Arkansas State Highway Commission Standard Specifications for Road and Bridge Construction adopted March 1, 1940.

BAR LIST PER BENT

MARK	SIZE	NO. PER BENT		LENGTH	BENDING DIAGRAM
		END	INT.		
B1	#6	4	4	29'-7"	
B2	#6	4	4	30'-4"	
B3	#6	4	4	28'-2" Str	
B4	#4	48	48	8'-11"	
B5	#6	15	15	6'-3"	
B6	#4	-	36	2'-6"	
B7	#4	12	-	5'-0"	
B8	#4	8	-	1'-8"	
B9	#4	5	-	3'-9"	

Dimensions are to centers of bars

DETAILS OF
STANDARD PILE BENTS
FOR STD 30'-0" R.C. SLAB SPANS

26'-0" CLEAR ROADWAY 2 CURBS @ 1'-6"

ROUTE SEC.
ARKANSAS STATE HIGHWAY COMMISSION
LITTLE ROCK, ARK.

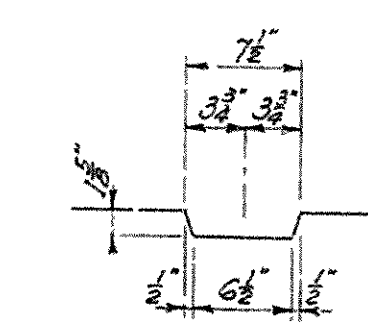
DRAWN BY: *AWB* DATE: 6-22-57
TRACED BY: *AWB* DATE: 6-28-57
CHECKED BY: *AWB* DATE: 6-28-57
BRIDGE NO. 2804 B & C
2811 B & C
DRAWING NO. 5408A
FILE DWG 9910A

L.P. Carlson
BRIDGE DESIGN ENGINEER

FED. ROAD No.	STATE	FED. AID PROJECT No.	FISCAL YEAR	SHEET No.	TOTAL SHEETS
6	ARK	I-30-2801/17		17	69
JOB No.	G.S.F.B.				

VARIATION FIGURES

BRIDGE No.	2811B			2811C	
Pier No.	1 & 2	3 & 5	4	1 & 2	3, 4 & 5
Bot. of Fly. Elev.	355.70	354.45	353.2	355.70	354.45
h	11'-3"	12'-6"	13'-9"	11'-3"	12'-6"
H	15'-3"	16'-6"	17'-9"	15'-3"	16'-6"



DETAILS OF KEYWAY
Scale: 1"=1'-0"

BAR LIST - EACH PIER

MARK	SIZE	No. REQUIRED			LENGTH	A	B	K	P ENDIA	BENDING DIAGRAM
		H=15'-3"	H=16'-6"	H=17'-9"						
P ₁	*8	12	—	—	13'-0"	Straight				
	*8	—	12	—	14'-3"					
	*8	—	—	12	15'-6"					
P ₂	*6	6	6	6	28'-1"	Straight				
	*4	38	—	—	13'-0"					
	*4	—	38	—	14'-3"					
P ₃	*4	—	38	—	15'-2"	Straight				
	*4	—	—	38	15'-2"					
	*4	—	—	38	27'-0"					
P ₄	*4	18	20	22	27'-0"	Straight				
P ₅	*4	23	29	29	7'-1"	1'-7 1/2"	1'-7 1/2"	4"	1 1/2"	
P ₆	*4	22	24	26	6'-5"	1'-7 1/2"	1'-3 1/2"	4"	1 1/2"	
*P ₇	*4	19 or 38	19 or 38	19 or 38	3'-6"	2'-6"	1'-6"	—	—	
P ₈	*4	38	38	38	3'-6"	Straight				
F ₁	*8	12	12	12	6'-1 1/2"	5'-0"	—	9"	8"	
F ₂	*5	14	14	14	5'-3"	4'-0"	—	5"	3 1/2"	
F ₃	*5	4	4	4	3'-6"	Straight				
F ₄	*5	6	6	6	29'-0"	Straight				
F ₅	*5	22	22	22	2'-7"	Straight				

*Fixed side only
Dimensions are to centers of bars, excepting P.

GENERAL NOTES

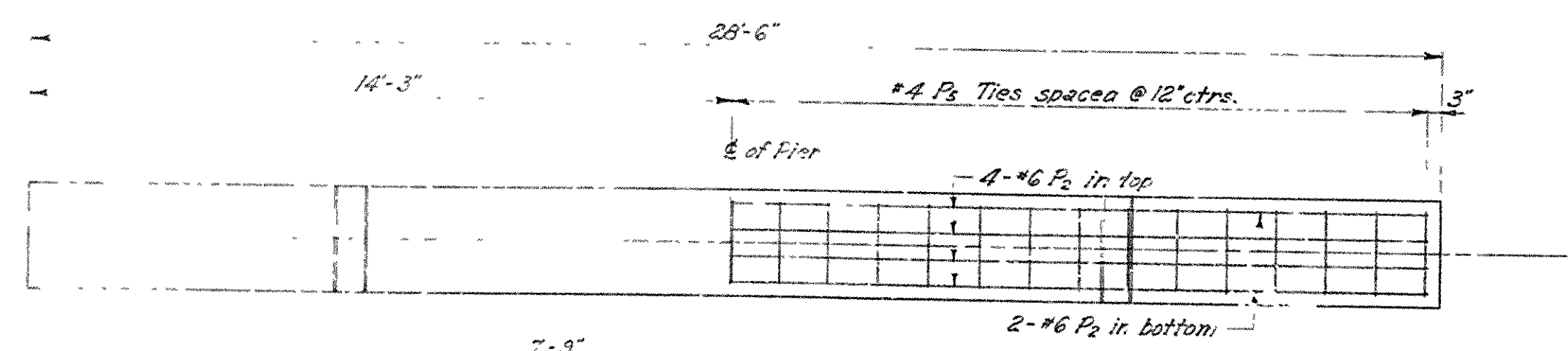
All concrete to be Class A and shall be poured in the dry. All exposed surfaces to be finished & unless otherwise noted.
Reinforcing steel to be deformed bars of intermediate grade unless otherwise noted by Special Provisions. Shop lists and bending diagrams are to be submitted and approval secured before fabrication is begun.
All construction joints in piers shall be horizontal and shall be provided with keys not less than 3" deep covering the middle third of both dimensions.
For Layout see Dwg. No. 3909 & 3910.
For Details of Superstructure see Dwg. No. 5408B.
For Details of End Bents see Dwg. No. 5408A.
Specifications: Arkansas State Highway Commission Standard Specifications for Road and Bridge Construction, adopted March 1, 1948.

DETAIL OF PIERS
BRIDGES OVER HURRICANE CREEK
BENTON-LITTLE ROCK ADD'L FRONTAGE TO P.C.
SALINE COUNTY

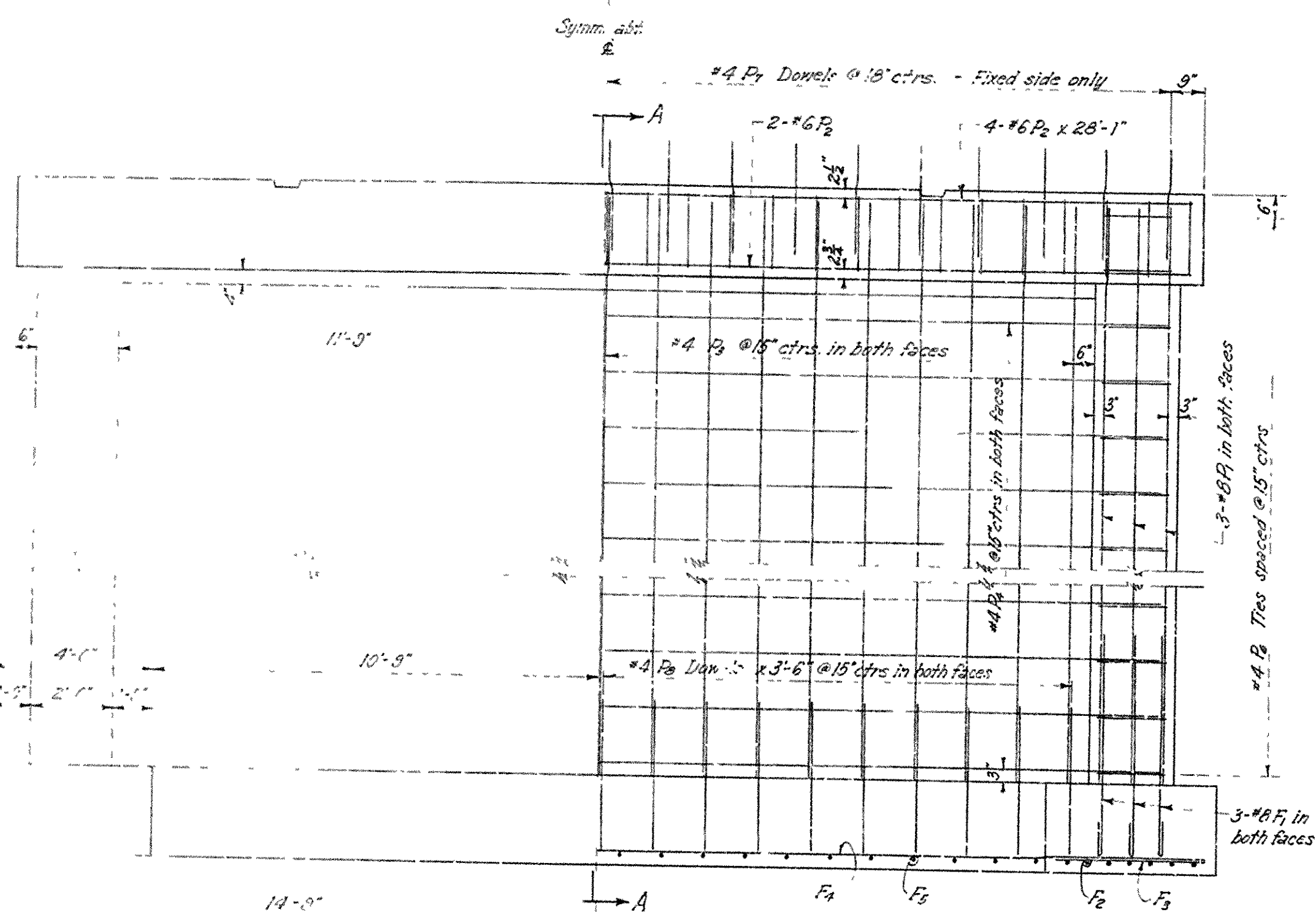
INTERSTATE ROUTE 30 SEC 2
ARKANSAS STATE HIGHWAY COMMISSION
LITTLE ROCK, ARK.

DRAWN BY: AS DATE: 1-15-58
TRACED BY: AS DATE: 1-15-58
CHECKED BY: AS DATE: 1-15-58
BRIDGE NO. 2811B 4C DRAWING NO. 9911

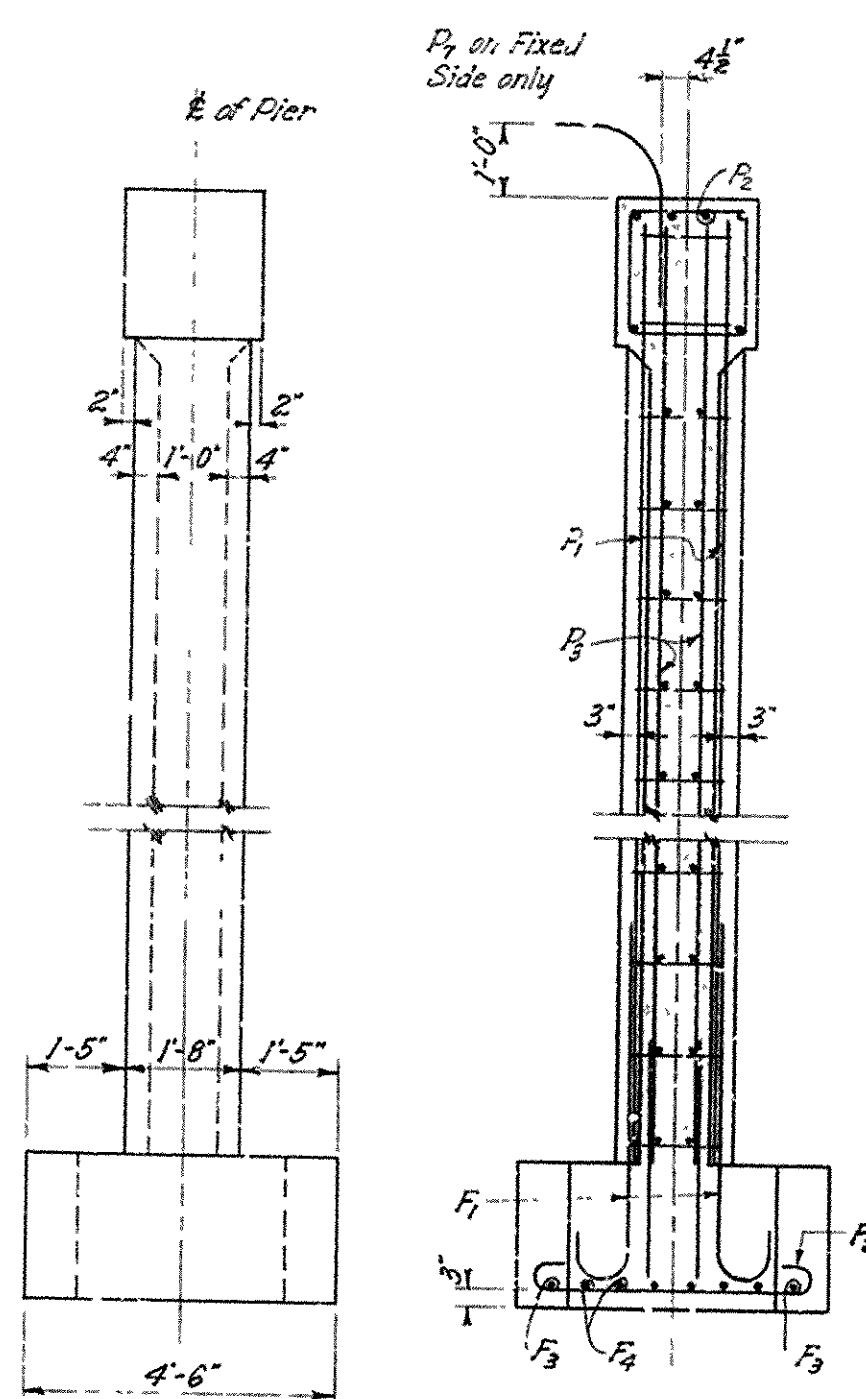
L. E. Nelson
BRIDGE DESIGN ENGINEER



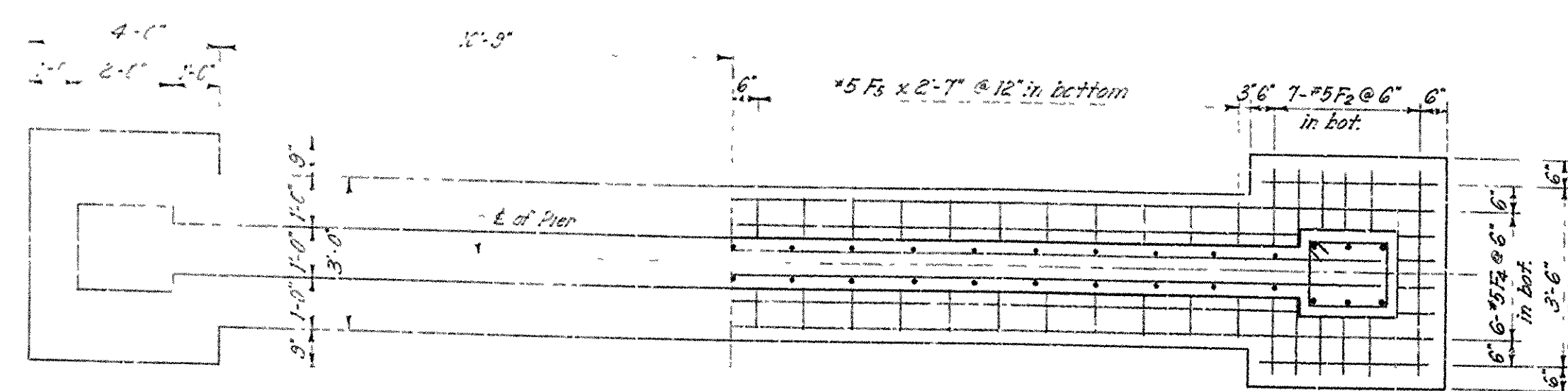
PLAN



ELEVATION



END VIEW SECTION A-A



PLAN OF FOOTING

